

**SPACE MAINTAINER** is used to prevent the teeth from migrating and tipping following early removal of baby teeth. The design of the space maintainer varies and would be advised by the orthodontist on which is suitable for your child.

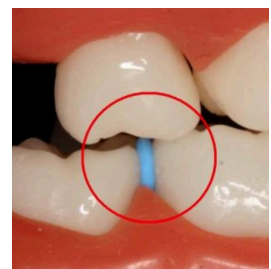


- It does not straighten, create space or align the teeth
- The space maintainer will be kept in the mouth until the adult teeth come through, which could be approximately several years or more
- We will monitor your child's jaw/dental development and the fit of the space maintainer periodically, if required
- Please note that if the anchor teeth where the appliance is bonded to become decayed or infected, the appliance would have to be removed and/or replaced
- A reassessment will be made for further treatment when all of your child's adult teeth are through
- Some of the complications include decay if the teeth are not brushed well. The gums may also be infected or swollen if oral hygiene is poor
- The space maintainer can dislodge, distort or break if it's not treated carefully, and with extremely hard diet
- If the appliance breaks, splits and is unrepairable, a new appliance may be required and a separate fee would be incurred

### **Procedures (2 appointments are required)**

#### **1. An impression of the teeth (15 minutes)**

Soft material would be placed in a mouth tray in which would be placed in the mouth for approximately 45-60 seconds. We will remove the tray from the mouth once the impression material hardens. We may have to place a separator (rubber ring) between the teeth to create space for the appliance to be fitted. No sticky food, hard brushing and flossing in the area as this would dislodge the separator. Contact us if the separator becomes dislodged as this needs to be replaced at least 2-3 days before appliance fitting.



#### **2. Appliance fitting (15-30 minutes) approximately 10-14 working days after the impression appointment**